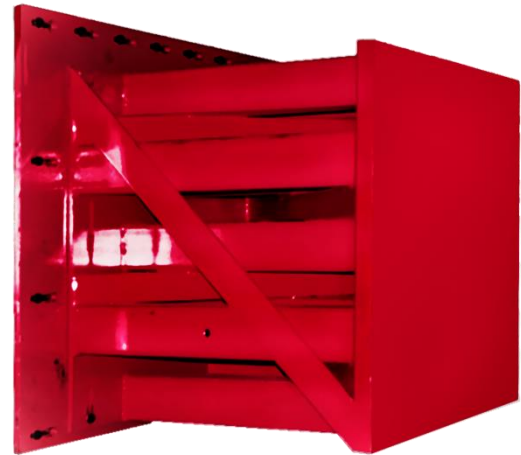


ODB Offset Barrier

Fixed barrier for frontal offset tests according to the following regulations:

- | Euro NCAP, ANCAP, C-NCAP, KNCAP, Latin NCAP, JNCAP, ASEAN NCAP
- | IIHS
- | ECE R94
- | FMVSS 208
- | EEVC WG 11
- | GB/T 20913-2007 (China)
- | Art 18 (Japan)
- | AIS-098 (India)
- | ADR 73/00 (Australia)



TECHNICAL SPECIFICATIONS

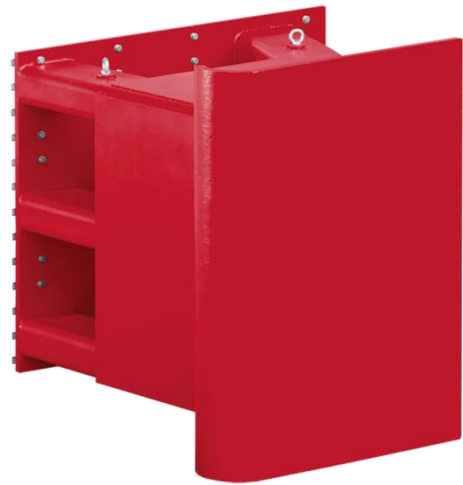
Weight	917 kg
Dimensions (L x W x H)	1,200 mm x 1,140 mm x 800 mm
Impact plate compatibility	Threaded holes / T-grooves with grid pattern 100 mm x 100 mm (M16) (custom sizes available)

Scope of supply | ODB Offset Barrier

Optional equipment | Instrumented ODB Offset Barrier with M=WALL Load Cells

Small Overlap Barrier

Fixed barrier for frontal crash tests with a 25 % overlap according to IIHS test protocol, available for both left and right hand drive.



TECHNICAL SPECIFICATIONS

Weight	2,860 kg
Dimensions (L x W x H)	1,778 mm x 2,085 mm x 1,524 mm
Impact plate compatibility	Threaded holes / T-grooves with grid pattern 100 mm x 100 mm (M16) (custom sizes available)

Scope of supply | Small Overlap Barrier

Optional equipment | Instrumented Small Overlap Barrier with M=WALL Load Cells

Pole Barrier

Fixed barrier for pole impact tests according to the following regulations:

- | Euro NCAP, ANCAP, US NCAP, KNCAP, Latin NCAP
- | IIHS
- | FMVSS 214
- | ECE R135
- | ADR 85/00 (Australia)



TECHNICAL SPECIFICATIONS

Weight (without concrete)	1,610 kg
Weight (with concrete)	1,824 kg
Dimensions (L x W x H)	2,007 mm x 1,650 mm x 2,300 mm (custom sizes available)
Pole diameter	254 mm (custom sizes available)
Impact plate compatibility	Threaded holes / T-grooves with grid pattern 100 mm x 100 mm (M16) (custom sizes available)

Scope of supply | Pole Barrier

Optional equipment | Instrumented Pole Barrier with M=WALL Load Cells

Barrier 30°

Fixed barrier for full width frontal tests according to FMVSS 208 test protocol. Suitable for both left and right hand drive.

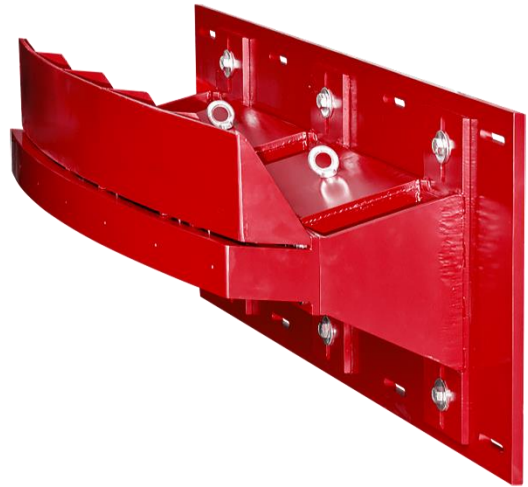


TECHNICAL SPECIFICATIONS

Weight	3,050 kg
Dimensions (L x W x H)	1,929 mm x 2,905 mm x 1,185 mm
Impact plate compatibility	Threaded holes / T-grooves with grid pattern 100 mm x 100 mm (M16) (custom sizes available)

Bumper Barrier RCAR

Fixed barrier for low-speed bumper tests according to RCAR test protocol.



TECHNICAL SPECIFICATIONS

Weight	702 kg
Dimensions (L x W x H)	558 mm x 1,900 mm x 650 mm
Impact plate compatibility	Threaded holes / T-grooves with grid pattern 100 mm x 100 mm (M16) (custom sizes available)

Scope of supply | Bumper Barrier RCAR

Optional equipment | Bumper cover
| Energy absorber

Barrier 10°

Fixed barrier for frontal tests with a 40 % overlap according to the RCAR test protocol.
Suitable for both left and right hand drive.

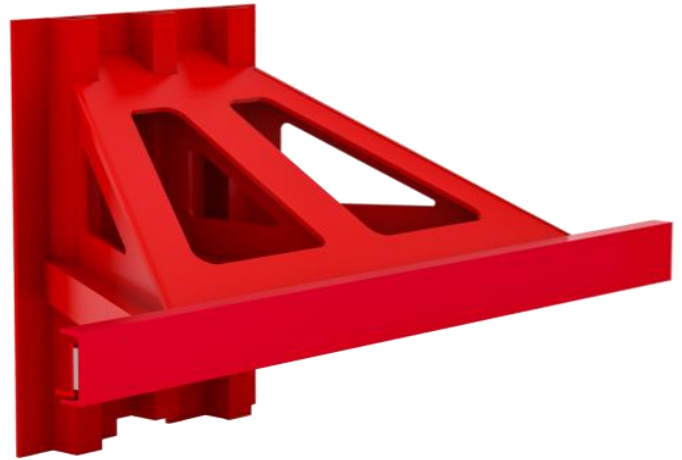


TECHNICAL SPECIFICATIONS

Weight	1,665 kg
Dimensions (L x W x H)	796 mm x 1,250 mm x 1,340 mm
Impact plate compatibility	Threaded holes / T-grooves with grid pattern 100 mm x 100 mm (M16) (custom sizes available)

Underride Barrier

Fixed barrier for commercial vehicle rear underride tests.



TECHNICAL SPECIFICATIONS

Weight	634 kg
Dimensions (L x W x H)	1,050 mm x 2,500 mm x 1,250 mm
Impact plate compatibility	Threaded holes / T-grooves with grid pattern 100 mm x 100 mm (M16) (custom sizes available)